



FACT SHEET - IRON ORE

情况说明书 - 铁矿石

Mid April 2011 2011年4月中旬

ASX Code: MDX

澳大利亚证交所代码: MDX

Corporate Description 公司简介

Mindax's Mt Forrest Iron Project is progressing through development with a view to moving toward mining phase.

Mindax的弗里斯特山铁矿项目正迈入采矿阶段。

The company is carefully putting in place necessary approvals and aligning infrastructure partners including rail and port.

公司正谨慎地选择合作伙伴,并准备所需的核准申请,同时正选择合适的铁路和港口基础设施承包商。

Coupled with its significant iron assets, Mindax is also the greenfields discoverer of a new uranium province near Mukinbudin, Western Australia.

Mindax 也是待开发区即将形成的新铀矿省的发现者。该铀矿位于西澳州Mukinbudin市附近,不久将鉴定出其符合澳大利亚联合矿储委员会认可的储量。

Through technically advanced exploration and an eye for detail, Mindax has successfully built a significant portfolio of minerals projects in Western Australia's Yilgarn Craton of about 40 tenements covering over 4600 sq km.

Mindax通过先进的技术勘探及其对细节的注重,在西澳州伊尔干(Yilgarn)克拉通地区顺利开发了约4600平方公里40个矿权的矿产项目投资组合。

Mindax aims to develop strategic resources through innovative exploration. Higher yield projects will be moved to production via strategic partnerships.

Mt Forrest Iron Project

弗里斯特山铁矿项目

The Biggest JORC compliant Iron resource in Yilgarn Iron Province at 1.43 Billion tonnes - up 41% since Oct

现是伊尔干铁矿省中部符合澳大利亚联合矿储委员会认可储量的最大资源项目。资源量为14.3亿吨,比10月上升了41%

Marked out as the area's leader, this promising billion and a half tonne Project lies 160 km north-west of the rail head at Menzies and connects with the existing Port of Esperance which is already 'Cape Class' capable.

作为该区的佼佼者,该潜力非常的15亿吨项目位于文齐斯市铁路起始点以西北160公里以外,贯通现有的埃斯佩兰斯港口。该港口已经能够处理海角级轮船。

Mt Forrest is currently in a late exploration stage (with PFS to begin imminently) and is steadfastly moving towards the mining phase.

弗里斯特山现处于勘探阶段晚期

(即将进行可行性研究),正稳步快速地移向采矿阶段。

Over \$30 million has been spent proving up an exceptional iron ore resource and putting in place mining and infrastructure planning, licences and permits.

3000多万元的花费验证了优越的铁矿资源。正在计划采矿和基础设施建设、执照和许可。



Mindax 旨在以创新的勘探开发关键的资源。较高产量的项目将由策略性合作推进到投产阶段。

Key Projects

主要项目

Mt Forrest 弗里斯特山	DSO Iron, Magnetite 直接装运磁铁矿
Yilgarn-Avon JV Uranium 伊尔干-埃文 Mortlock JV	Sedimentary 沉积铀矿 Copper-Gold 铜-金矿
莫特洛克合作公司	金铜矿

Address

地址

Level 2, 25 Richardson Street
West Perth WA 6005

西澳洲珀斯西里查森街25号3楼

T电话: +61 8 9485 2600

F传真: +61 8 9485 2500

Investors 投资人

Greg Bromley 格雷格·布罗摩里
Managing Director 常务董事
E 电子邮件: info@mindax.com.au

Media 媒体宣传

David Utting 戴维·翺廷
M 手机: +61 (0) 416 187 462
E 电子邮件: david@davidutting.com

Mindax 澳大利亚商号 ABN: 28 106 866
442

Ongoing drilling to further boost the Resource and move more ore to JORC 'measured' status and upgrade DSO.

持续的钻探进一步增加了资源量，把更多的铁矿资源加入到澳大利亚联合矿储委员会认可的实测量和直接装运铁矿量。

High Demand & Quality Shipping Product

高需求及高质量船运产品

- 10 Million tonne per annum plus base case
基础方案年产量 1000 万吨
- 68-70% Fe, pellet and/or sinter, blast furnace and DRI feed
含铁 68-70%，球团和/或烧结、高炉和直接还原铁送料
- High quality, low Phosphorous, low Silicon, feed stock
高质量、低磷、低硅送料
- Supply Security - 30+ year mine life
供应保证-30 年以上采矿年限

Reliability & Dependability

可信可依

Mindax is distinguished by a higher grade product and a **realistic 2015 export timeline (DSO start up in 2014).**

Mindax 因其高质量产品以及实际可行的 2015 年投产时间线而闻名（2014 年开始直接装运矿石运输）。

It is proposed for a DSO start up operation moving to an initial **10 Mtpa of high quality processed magnetite product over a 30+ year mine life.**

营运初期建议直接装运矿石年产量为 1000 万吨高质量次铁矿，采矿年限 30 年以上。

Demonstrated Quality Mineral Resource

已证明的高质量矿产资源

Mt Forrest currently contains:
弗里斯特山现包含:

- **Magnetite: 1.43 billion tonnes @31.5% Fe (JORC Indicated & Inferred Category)**
磁铁矿: 143 亿吨, 含铁量 31.5% (澳大利亚联合矿储委员会指示和推测类别)
- **Hematite (DSO): 4.5 million tonnes @ 54.3% Fe, and includes 2.66Mt @ 54.2% Fe (Indicated Category), and 1.91Mt @ 54.3% Fe (Inferred Category).**
赤铁矿 (直接装运矿石): **450 万吨含铁量 54.3%**, 包括 266 万吨含铁 54.2% 的铁矿石 (指示类别), 和 191 万吨含铁 54.3% 的铁矿石 (推测类别)。
- Magnetite product very easy to process being soft material needing only 40 micron grind

磁铁矿产品非常容易加工，因其柔软度只需采用 40 微米粒度。

- **82.9million tonnes @ 32.4% Fe in JORC Indicated Category.**
8290 万吨含铁量 32.4%符合澳大利亚联合矿储委员会指示资源类别。
- **Mt Forrest is a major enhanced mineralised system with an Exploration Target up to 2.8 billion tonnes.**
弗里斯特山是重大的矿化资源系统，勘探目标达 28 亿吨。

Transport Infrastructure Largely In Place

运输基本设施大部分已经到位

- Esperance Port - 12 Mtpa to be upgraded to 35 Mtpa by 2013
埃斯佩兰斯港口 - 1200 万吨，将在 2013 年增加到 3500 万吨
- Cape Class 175,000 DWT & Panamax capable
海角级轮船总载重吨位 175,000，能处理巴拿马行轮船
- Rail - Menzies to Esperance in place, undergoing upgrade
铁路 - 文齐斯市到埃斯佩兰斯港口到位，正在升级
- Rail - Mt Forrest to Menzies (160 km) 3rd party provider interest
铁路-弗里斯特山到文齐斯市（160 公里）考虑由第三方供应
- 2D & 3D rail studies in progress 
二维和三维铁路研究进行中

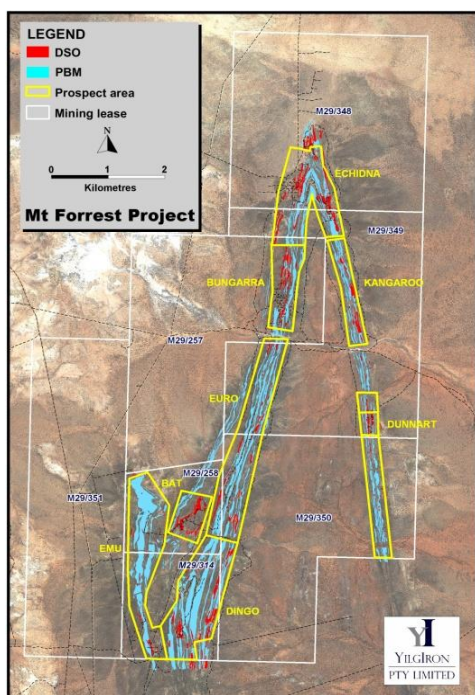
Mine Site Construction and Processing

矿区建设和工序

- **Mine site construction required**
需要进行矿山建设
- **Processing and pelletisation plant required**
需要加工和制球厂
- **3rd party Power (165 MW) required (gas pipeline 90km away)**
需要第三方电力供应(165 兆瓦)(燃气管道在 90 公里 外)
- **Services and accommodation village required**
需要服务和住房区的提供

Permits and Leases

许可和矿权



The project covers seven Mining Leases over 50 sq km and includes extensive, near surface iron formation varying from 500 to 2000 metres width, over 20 km of strike (less than half of which has been drilled)

该项目覆盖了 50 平方公里中 7 个矿权区域，包括了从 500 米到 2000 米不等 20 公里走向长度的近地表广阔的铁矿建造（半数以上未被钻探）。

Water leases (5.4 GL/ha) are in place and leases for a transport corridor to the railhead at Menzies have been lodged. Solid progress on Environmental permits and Heritage management plan and approvals in place.

水利租用权（年水量 5400 兆升）已到位。已经申请了从输送长廊到文齐斯市铁路起始点的租用权。环境许可申请得到良好进展，遗迹管理计划和审批已到位。

Project Summary

项目概要

Negotiations with rail, port and other infrastructure providers are well advanced.

与铁路、港口和其他基础设施供应商的谈判已经相当超前。

Easy financials with lower future Opex & Capex due to quality ore body characteristics

因其高质量矿体特质，未来运营成本和基本建设费用较低，融资简单

Mindax has carefully ticked all the boxes to insure a solid iron resource and successful development of infrastructure to take Mt Forrest product to an export market.

Mindax 已经为建立可靠铁矿资源调查了有关的方方面面，并为顺利建立基础设施，把弗里斯特山的产品推动到出口市场打下了坚实的基础。

With a yet to be chosen joint venture/cornerstone partner, Mindax aims to transition from explorer to exporter.

Mindax 还在选择从勘探阶段到出口阶段的合作公司/奠基伙伴。

"Mindax: meticulous exploration and planning detail - Distinguished by a realistic 2015 export timeline"

“Mindax：一丝不苟的勘探和详细的计划 - 因其 2015 年实际可行的出口时间线而闻名”

The information in this report that relates to Exploration Results and Mineral Resources is based on information compiled by Mr Gregory John Bromley who is a member of the Australasian Institute of Mining and Metallurgy, with more than 5 years experience in the field of activity being reported on. Mr Greg Bromley is a full-time employee of the Company and has sufficient experience which is relevant to the style of mineralisation and type of deposit and to the activity which he is undertaking to qualify as a Competent Person as defined in the 2004 Edition of the "Australasian Code for Reporting of Exploration Results, Mineral Resources and Ore Reserves". Mr Bromley consents to the inclusion in the report of the matters based on his information in the form and context in which it appears.

此材料中关于勘探结果和矿产资源的信息是由格雷戈里·约翰·布罗摩里先生编撰的，布罗摩里先生是澳大利亚采矿和冶金协会的会员，简介中列有其五年多的行业经验。

布罗摩里先生是公司的全职雇员，他对相关的矿化类型和矿藏种类具有充足的经验，所从事的活动符合2004年版本的“澳亚报告勘探结果、矿物资源和矿石储量标准”的合格人士要求。布罗摩里先生同意该报告以现用的形式和语境引用他所提供的信息。